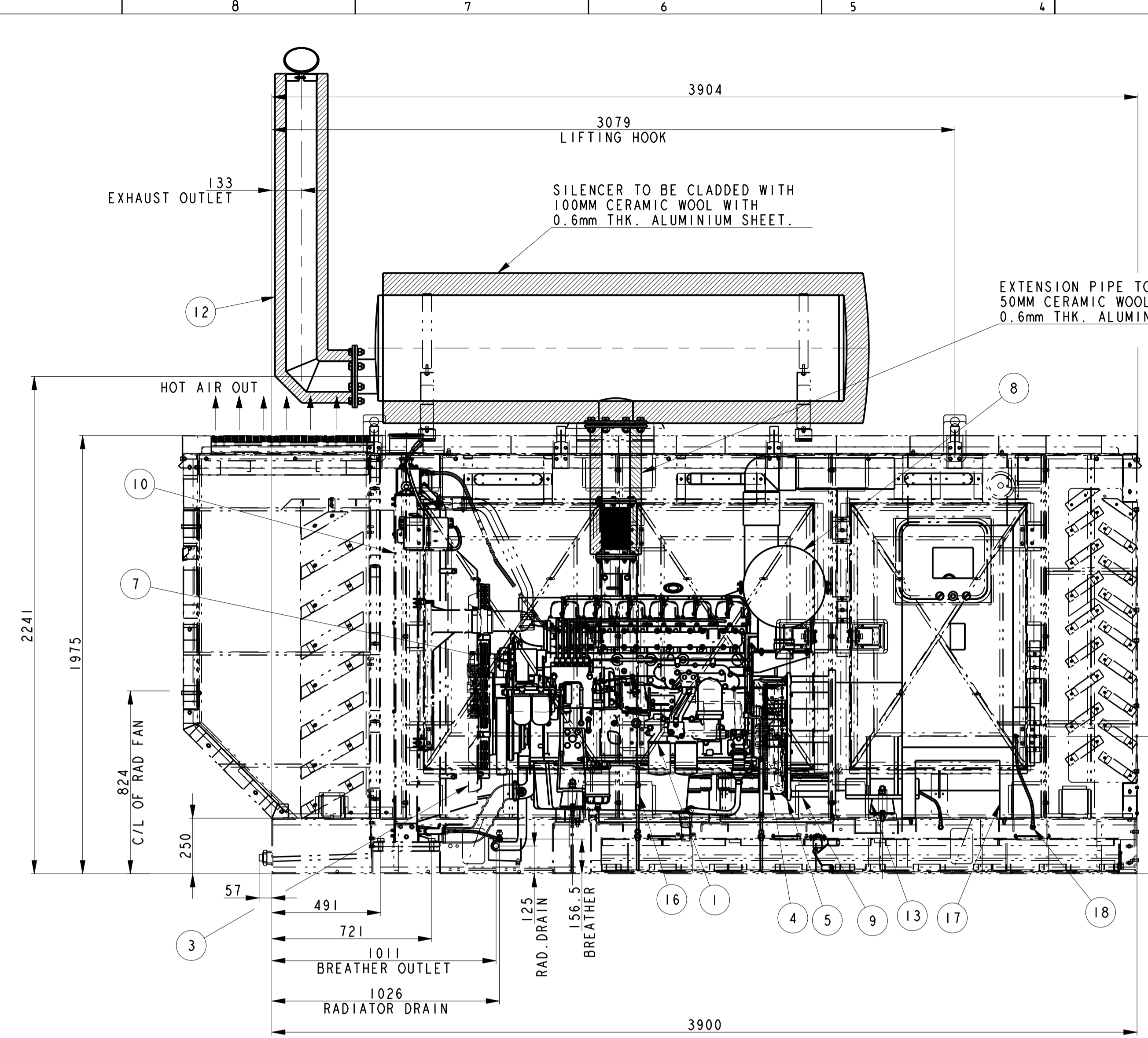
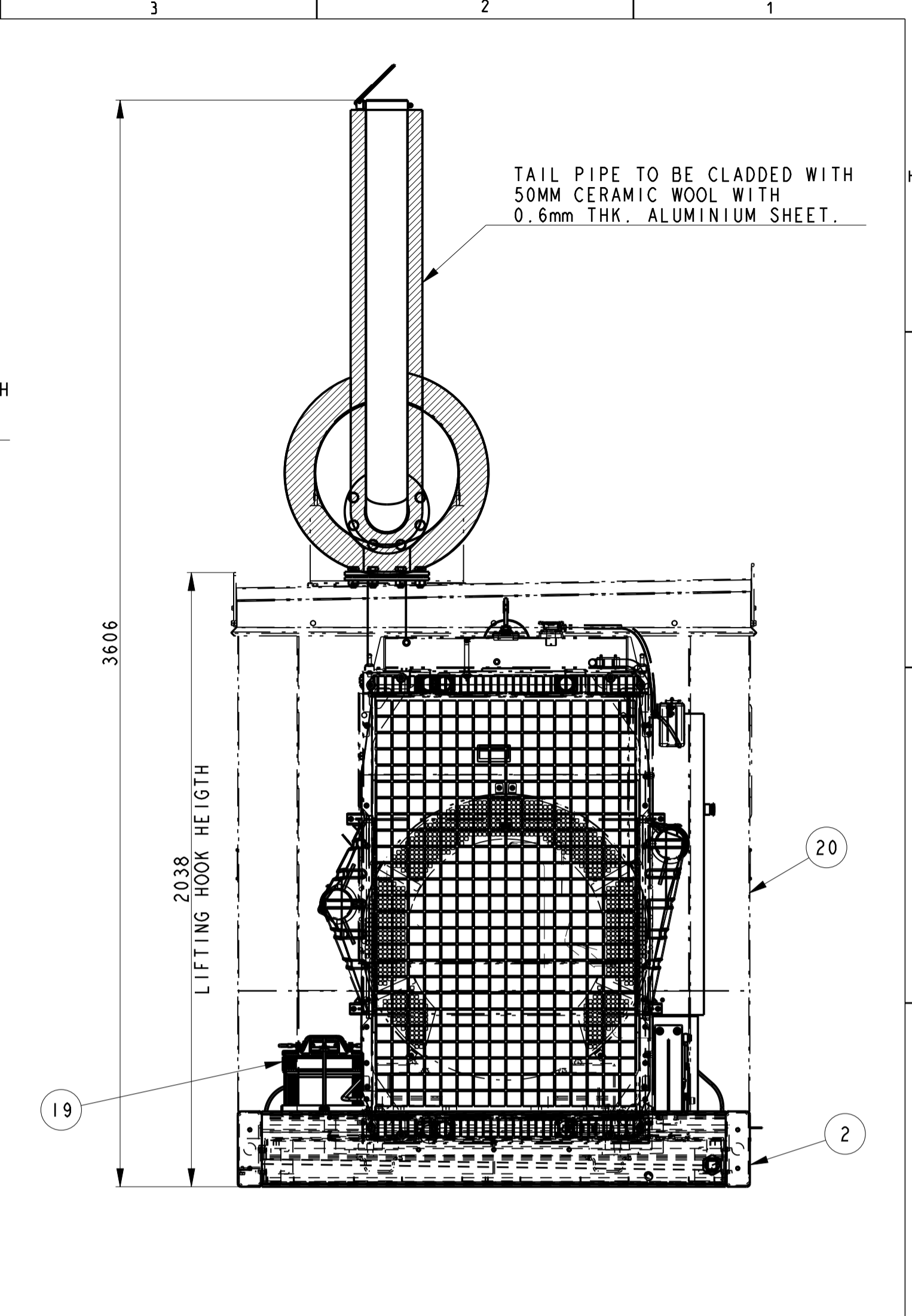


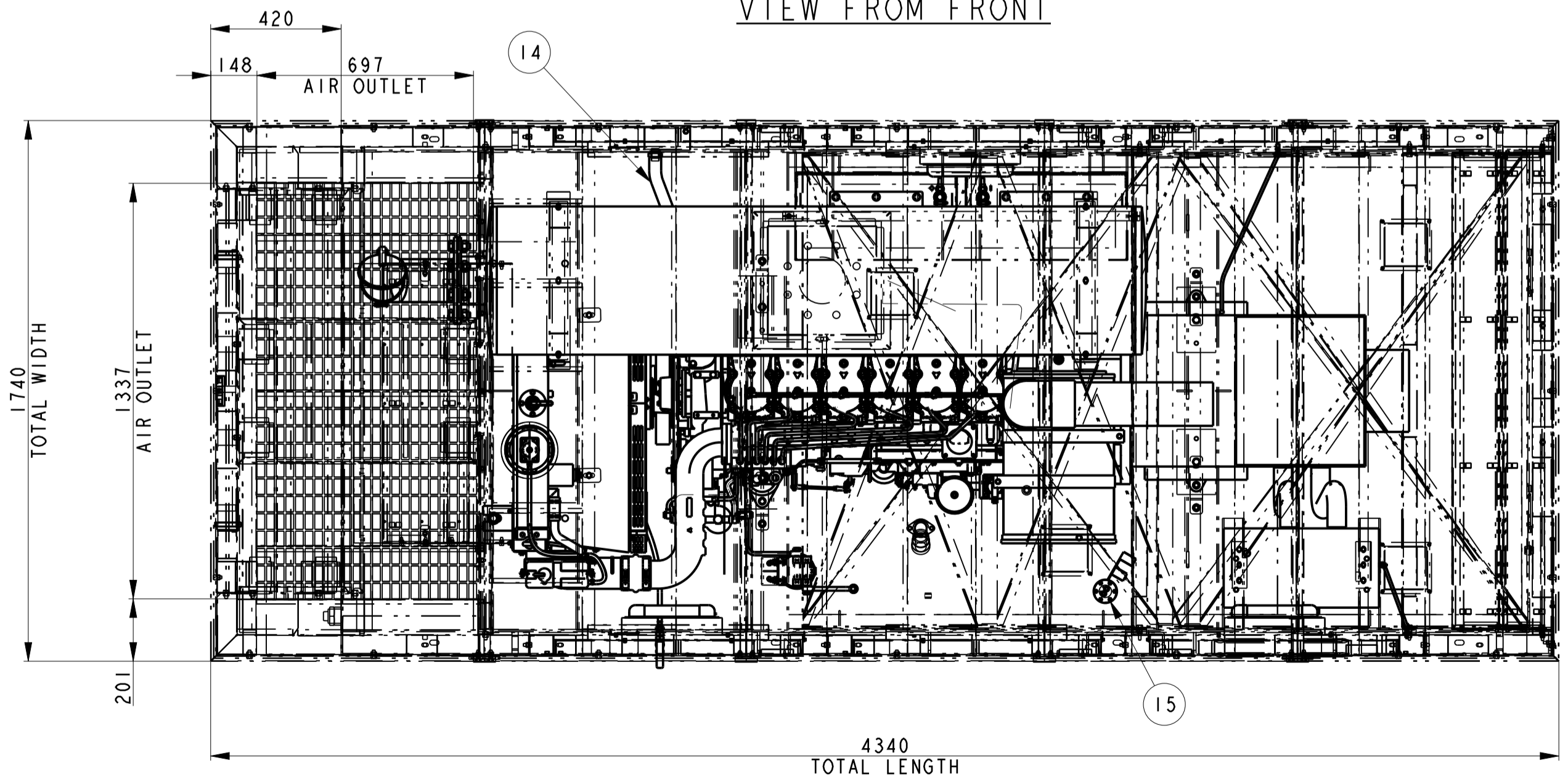
VIEW FROM ALTERNATOR SIDE



VIEW FROM FRONT



VIEW FROM GEAR END



VIEW FROM TOP

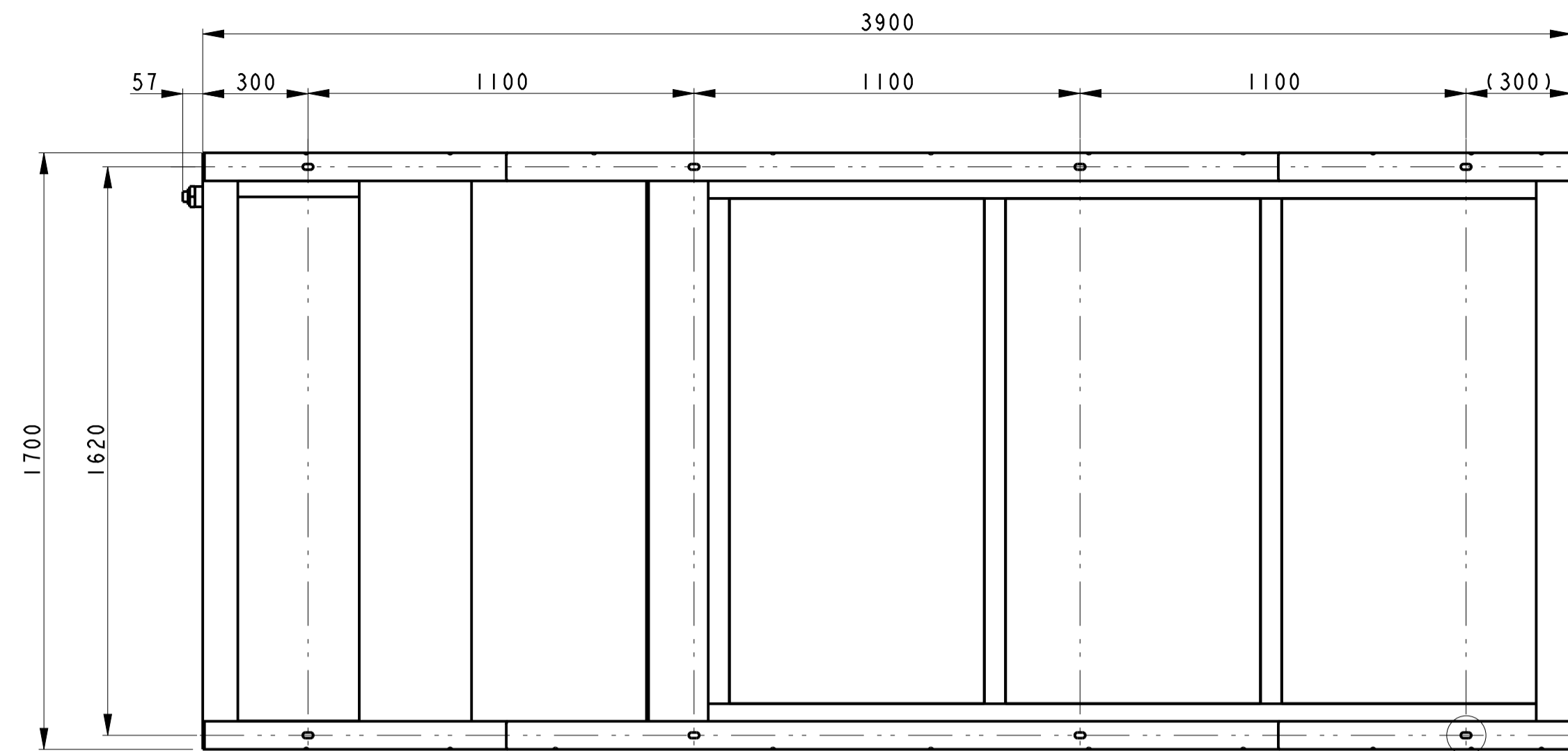
SR.No.	DESCRIPTION
20	CANOPY ASSEMBLY
19	BATTERY & BATTERY CABLE
18	EARTHING CABLE
17	CONTROL PANEL & STAND
16	FUEL PIPING
15	FUEL LEVEL SENSOR
14	BREATHER HOSE
13	AVM ASSEMBLY
12	TAIL PIPE
11	EXHAUST SYSTEM
10	COOLING SYSTEM
9	ALTERNATOR COUPLING
8	AIR CLEANER ASSLY.
7	CHARGING ALTERNATOR ASSLY.
6	STARTER & MTG. ASSEMBLY
5	FLYWHEEL HOUSING ASSEMBLY
4	FLYWHEEL ASSEMBLY
3	FAN & MOUNTING
2	BASE PLATE ASSEMBLY
1	ENGINE ASSEMBLY

- NOTES:-
1. OUTER DIMENSION-4340(L)x1740(W)x2615(H)
 2. DOOR HINGES - OUTSIDE
 3. PAINT- POWDER COATING FOR ALL CANOPY PANELS KOEL GREEN (IVORY).
 4. FOR DETAILS OF FOUNDATION LAYOUT AND INSTALLATION PLAN FOR OPEN DOORS REFER SHEET 2 OF 2
 5. APPROX. WEIGHT OF GENSET

IF IN DOUBT ASK
 PRINTS OF PREVIOUS REVISION NO. SHOULD BE SCRAPPED

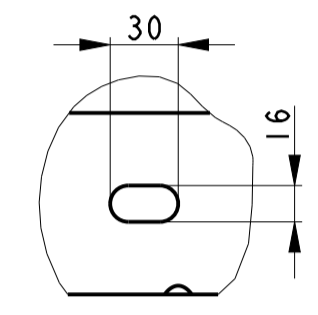
THIS DRAWING IS PROPERTY OF KIRLOSKAR OIL ENGINES LTD. AND MUST BE RETURNED ON REQUEST. IT IS SUBMITTED AS CONFIDENTIAL INFORMATION WITH OUR ENQUIRY, TENDER, ORDER OR CONTRACT NO. IT IS NOT TO BE ISSUED FOR ANY OTHER PURPOSE OR ORDER NOR MAY BE COPIED OR LENT WITHOUT OUR AUTHORITY IN WRITING.
 FORMAT No. RBE/FORM/056/01 (REFER DOP No. RBE 4.4/03)

LIFECYCLE STATE:- RELEASED				CASTING/FORGING DRG. NO.			
UNLESS OTHERWISE SPECIFIED				CAD DRG. FILE:- PLM			
● ALL DIMENSIONS ARE IN mm.				MATERIAL :-			
● SURFACE ROUGHNESS AS PER CO. STD. NO. 10501.				HEAT TREATMENT :-			
● UNMENTIONED TOLERANCES AS PER CO. STD. NO. 11001MM.				WEIGHT (kg) :-			
● REMOVE ALL SHARP BURRS AND SHARP EDGES.				DRN DAVINCI/DMK TITLE			
● DRAWING NOT TO BE SCALED.				CHD. NM			
LAYOUT UPDATION ACCORDING TO NEW BOM STRUCTURE & GENBA COMMENTS				APPD. JGJ			
PUNB F6.1544 26.03.2014				DATE 28.01.2013			
NEW RELEASE				UNMENTIONED			
REVISION				RAD11			
REVISION				CHAMFER			
REVISION				UNDERCUT			
KIRLOSKAR OIL ENGINES LTD., PUNE 411 003 (INDIA)				GENSET LAYOUT			
250KVA				SCALE 1:15			
DRAWING NO. F6.5720.00.00				SHT. NO 1 OF 2			
REV. NO. 01				TYPE SL90			

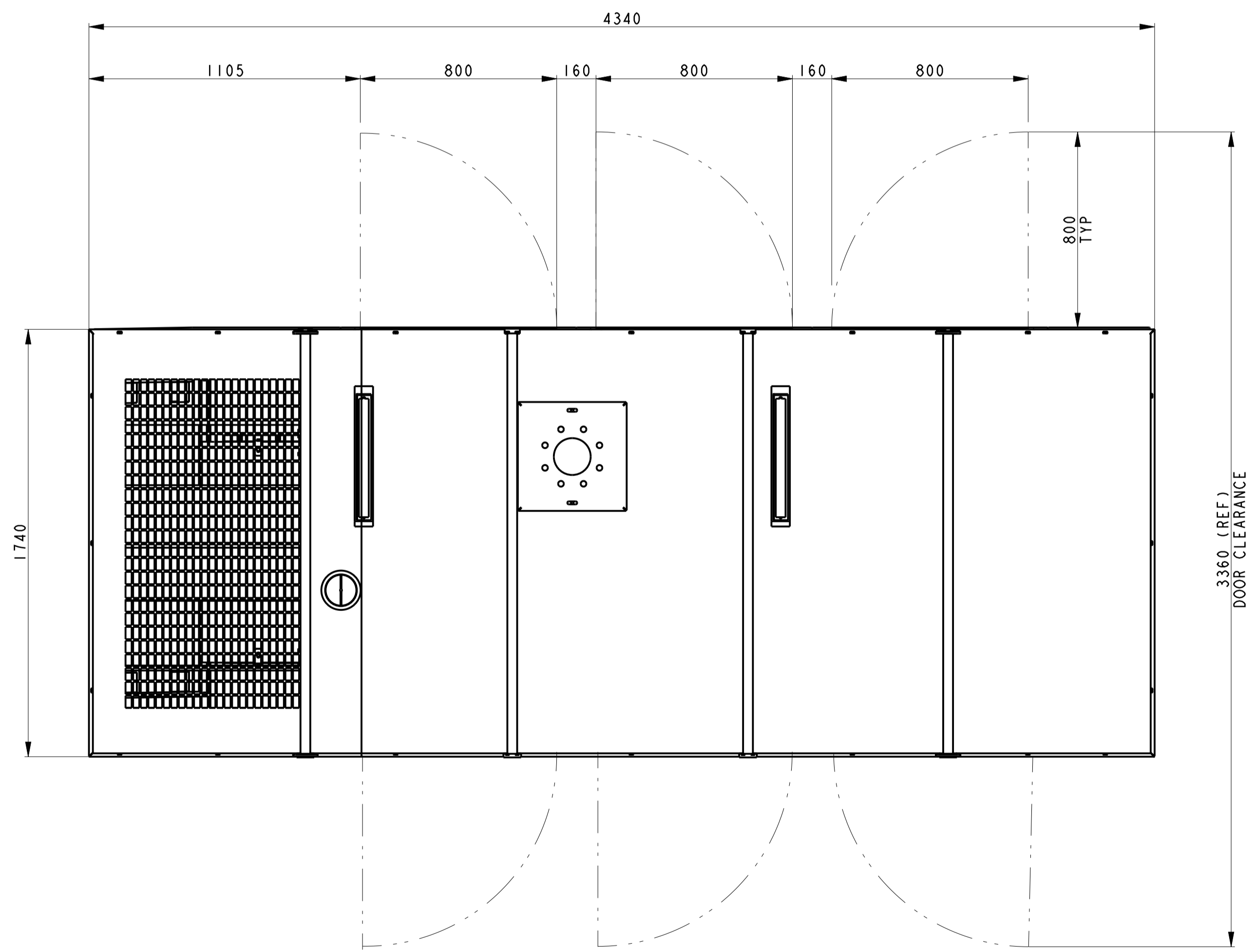


FOUNDATION LAYOUT

SEE DETAIL A

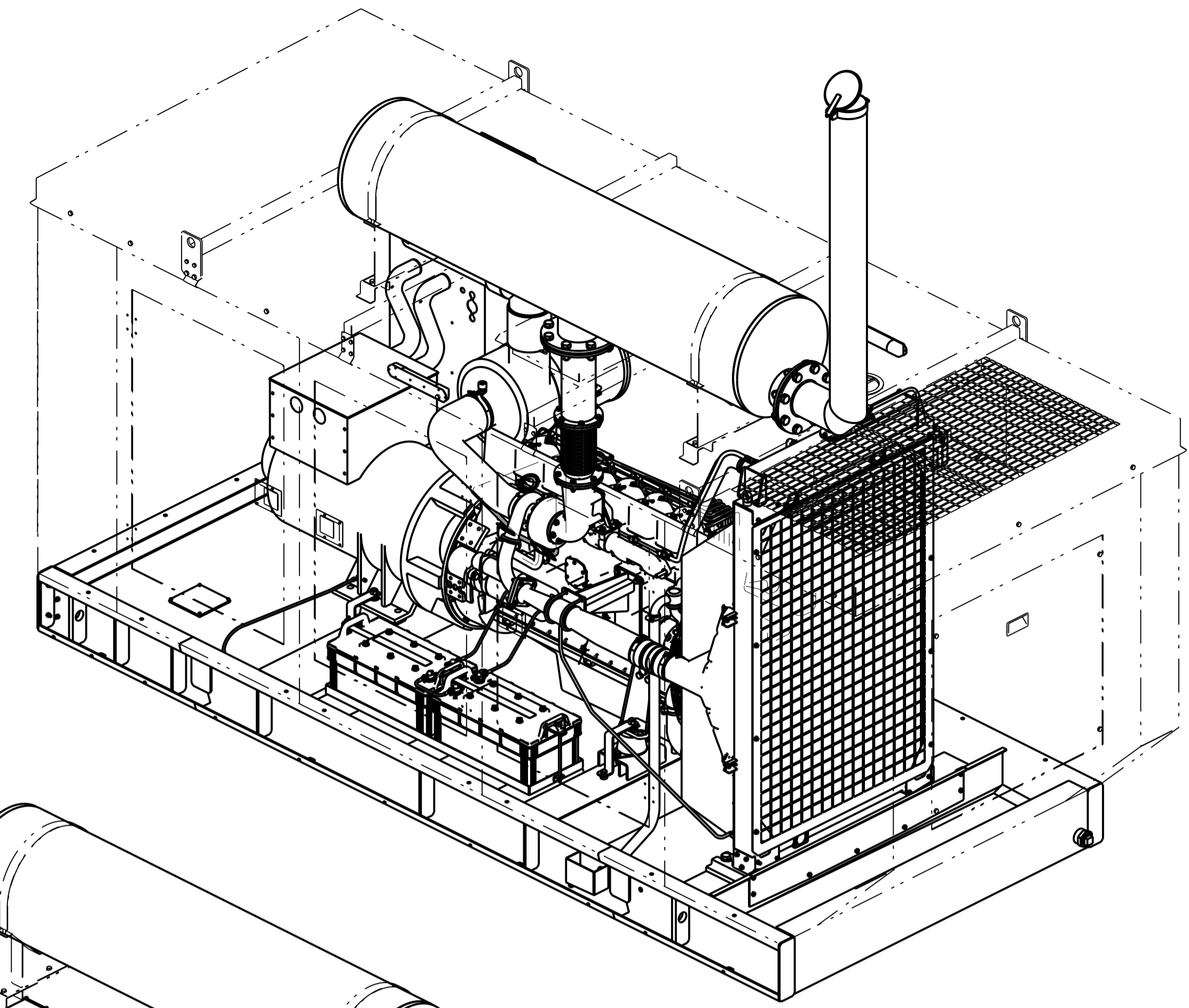


DETAIL A
8-NOS OF SLOT
SCALE 1:3

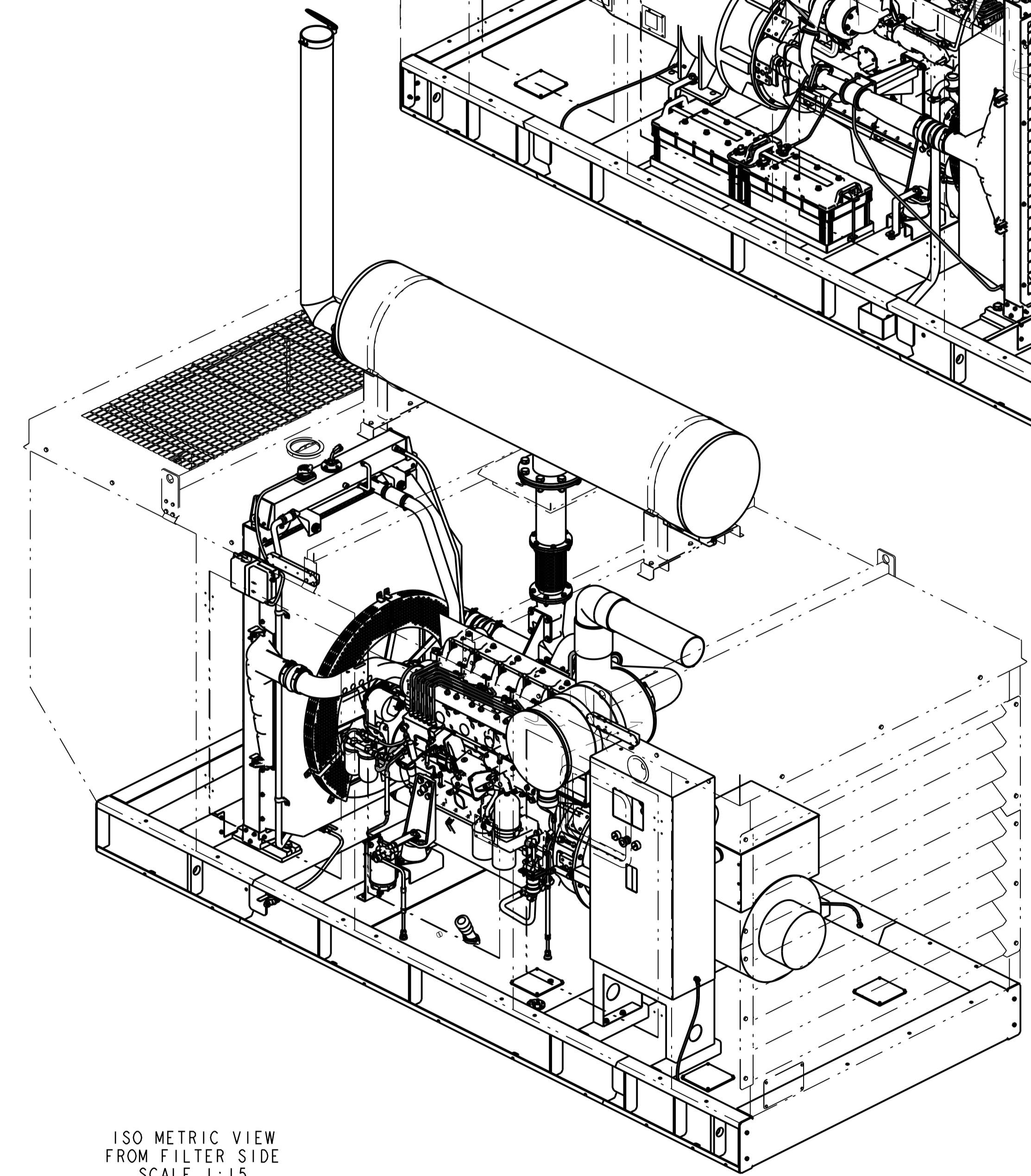


INSTALLATION PLAN FOR OPEN DOORS

ISO METRIC VIEW
FROM STARTER SIDE
SCALE 1:15



ISO METRIC VIEW
FROM FILTER SIDE
SCALE 1:15



IF IN DOUBT ASK
PRINTS OF PREVIOUS REVISION NO. SHOULD BE SCRAPPED

THIS DRAWING IS PROPERTY OF KIRLOSKAR OIL ENGINES LTD. AND MUST BE RETURNED ON REQUEST. IT IS SUBMITTED AS CONFIDENTIAL INFORMATION WITH OUR ENQUIRY, TENDER, ORDER OR CONTRACT NO. IT IS NOT TO BE ISSUED FOR ANY OTHER PURPOSE OR ORDER NOR MAY BE COPIED OR LENT WITHOUT OUR AUTHORITY IN WRITING.
FORMAT No. RBE/FORM/056/01 (REFER DOP No. RBE 4.4/03)

LIFE CYCLE STATE:- RELEASED		CASTING/FORGING DRG. NO.	
MATERIAL :-		HEAT TREATMENT :-	
DRN DAVINC I/DMK		TITLE	
CHD. NM		GENSET LAYOUT	
APPD. JGJ		250KVA	
DATE 28.01.2013		DRAWING NO.	
UNMENTIONED		REV. NO.	
RAD11		KIRLOSKAR OIL ENGINES LTD.,	
CHAMFER		PUNE 411 003 (INDIA)	
UNDERCUT		F6.5720.00.00	
01 LAYOUT UPDATION ACCORDING TO NEW BOM STRUCTURE & GENSET COMMENTS		01	
00 NEW RELEASE		00	
No.	REVISION	ZONE	MODIFIED BY
No.	REVISION	ZONE	MODIFIED BY
			DATE
			DATE